

# SPECIAL FINANCING AVAILABLE

on appliances \$499 and up.  
On Approval of credit. See store for details.

## FOUR PIECE MAYTAG® PACKAGE only \$1,999



MAYTAG®

### MAYTAG® 19 CU FT CAPACITY TOP MOUNT REFRIGERATOR

- Strongbox™ Door Bins
- Speed Cool
- FreshFlow™ Produce Preserver

### MAYTAG® OVER-THE-RANGE MICROWAVE

- 2 Speed Exhaust Fan
- Precision Cooking System

### MAYTAG® BUILT-IN DISHWASHER

- JetClean Plus Wash System
- Heavy Wash Cycle
- Twice the Life Motor

### MAYTAG® 5.3 CU FT CAPACITY ELECTRIC RANGE

- Four Cooktop Elements
- Precision Cooking System
- Self Cleaning

## MAYTAG® LAUNDRY PAIR \$499/ea.



MAYTAG®

### MAYTAG® 3.4 CU FT CAPACITY TOP LOAD WASHER

- 4 Selectable Water Levels
- Porcelain on Steel Wash Basket

### MAYTAG® ELECTRIC DRYER WITH GENTLEBREEZE™ DRYING SYSTEM

- Premium Dryer Drum Rollers
- 7.0 Cu. Ft. Super Size Capacity Plus



### WHIRLPOOL GOLD® DISHWASHER

- Sensor™ Cycle
- Overnight Cycle
- Improved AnyWare™ Plus Silverware Basket

**\$499**

### MAYTAG®

### MAYTAG® ELECTRIC RANGE

- Precision Cooking™ System
- Power Center Cooktop
- Four Cooktop Elements

**\$799**



### WHIRLPOOL® GAS RANGE

- 4.4 Cu Ft Capacity
- (1) 7,500 BTU Oval Burner
- 2 Adjustable Oven Racks

**\$569**

### Amana

### AMANA® 18.5 CU FT CAPACITY BOTTOM MOUNT REFRIGERATOR

- Temp Assure™ Freshness Controls
- Reversible Door Swing
- Two Full-Width Adjustable Glass Shelves

**\$999**



### WHIRLPOOL® 18 CU FT CAPACITY TOP MOUNT REFRIGERATOR

- Humidity-Controlled Crispers
- SpillMizer™ Glass Shelves
- Fixed Utility Compartment

**\$699**

### MAYTAG®

### MAYTAG® 18 CU FT CAPACITY SIDE-BY-SIDE REFRIGERATOR

- Store-N-Door® Ice Dispensing System
- FreshLock™ Crisper with Humidity Control
- Adjustable Spill-Catcher™ Shelves

**\$1,199**

MAYTAG®

KitchenAid®  
HOME APPLIANCES



Amana

MAYTAG  
HOME APPLIANCE CENTER

ALLSTAR  
HOME  
APPLIANCE  
CENTER

MAYTAG  
HOME APPLIANCE CENTER

Pam & John Ciccio  
Owners

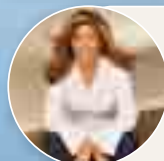
SALES  
SERVICE  
PARTS  
DELIVERY  
INSTALLATION  
PRODUCT  
EXPERTISE  
ALL UNDER  
ONE ROOF!

Prices good while supplies last.  
Limited quantities!

F-131

ITEMS MAY BE PRICED LOWER IN STORE  
SOME ITEMS HAVE LIMITED AVAILABILITY

Offers valid January 1 - 31, 2012  
Unless Otherwise Stated



BRAND  
SOURCE

Kathy Ireland

BrandSource  
Brand Ambassador

# BIG SAVINGS ON MAYTAG®, AMANA® & WHIRLPOOL® BRANDS!



## WHIRLPOOL® 18 CU FT CAPACITY TOP MOUNT REFRIGERATOR

- Full-Width Wire Shelves
- Fixed Utility Compartment
- Fixed Freezer Door Storage

W8TXEGFYB

**\$749**



## WHIRLPOOL® 25 CU FT CAPACITY SIDE-BY-SIDE REFRIGERATOR

- PuR® Water Filtration System
- Full-Width Adjustable Slide-Out SpillGuard™ Glass Shelves
- Adjustable Opaque Gallon Door Bins

EDSKVEXVQ

**\$999**



## MAYTAG®

### MAYTAG® 25 CU FT CAPACITY SIDE-BY-SIDE REFRIGERATOR

- Right Sized Ice Cubes
- Two Clear FreshLock™ Crispers
- Three Adjustable Spill-Catcher™ Shelves

MSD2573VEW

**\$1,099**



**Amana**

**\$1,199**

### AMANA® 25 CU FT CAPACITY SIDE-BY-SIDE REFRIGERATOR

- PUR® Water and Ice Filter
- Temp Assure™ Freshness Controls
- Sealed Crisper Drawer

ASD2522WRS



**MAYTAG®**

**\$1,299**

### MAYTAG® 19 CU FT CAPACITY BOTTOM MOUNT REFRIGERATOR

- Humidity Controlled FreshLock™ Crisper
- SpillCatcher™ Glass Shelves
- Gallon Door Bins

MBF1958XEW



**MAYTAG®**

**\$1,499**

### MAYTAG® 25 CU FT CAPACITY SIDE-BY-SIDE REFRIGERATOR

- Three Adjustable Spill-Catcher™ Shelves
- PUR® Push-Button Water and Ice Filter
- Store-N-Door® Ice Dispensing System

MSD2559XEB



**KitchenAid®**  
FOR THE WAY IT'S MADE.®

**\$1,699**

### KITCHENAID® 24.8 CU FT CAPACITY FRENCH DOOR REFRIGERATOR

- FreshChill™ Temperature Management System
- Two Pull-out Freezer Baskets
- Interior Water Dispenser

KBFS25EWWH



**MAYTAG®**

### MAYTAG® 26 CU FT CAPACITY FRENCH DOOR REFRIGERATOR

- DirectChill™ Ice Dispensing System
- Humidity Controlled FreshLock™ Crisper
- SmoothClose™ Freezer Drawer Track System

MF12665XEW

**\$1,999**



### WHIRLPOOL® 26 CU FT CAPACITY FRENCH DOOR REFRIGERATOR

- Accu-Chill™ Temperature Management System
- 6th Sense™ Technology
- Adaptive Defrost System

G16FARXXY

**\$2,199**



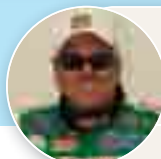
**MAYTAG®**

### MAYTAG® 26 CU FT CAPACITY FRENCH DOOR REFRIGERATOR

- LED Interior Lighting
- Humidity Controlled FreshLock™ Crisper
- Access Fresh Food At Eye Level

MF12670XEM

**\$2,399**



**BRAND SOURCE**

BrandSource® is proud to sponsor

**John Force**

15 NHRA Championship Winner

# SAVE ON WASHER AND DRYER PAIRS

**HIGHLY RATED**  
by a Leading Consumer Magazine



## MAYTAG®

### MAYTAG® MAXIMA™ 4.3 CU FT CAPACITY FRONT LOAD WASHER

- PowerWash™ Cycle
- NSF Certified Sanitize Temperature
- 16 hour Fresh Hold™ with Dynamic Venting Technology™  
MHW6000XW

### MAYTAG® MAXIMA™ 7.4 CU FT CAPACITY HIGH-EFFICIENCY DRYER

- Advanced Moisture Sensing
- 360° Front and Rear Heat Seal
- Wrinkle Control Cycle  
MED6000XW - \$1,149

**BRAND  
SOURCE®**

**10 YEAR**  
LIMITED PARTS  
WARRANTY



**BEST  
CLEANING**  
POWER WASH

**BETTER  
BUILT**  
WITH AMERICAN PARTS  
DESIGNED, ENGINEERED & ASSEMBLED  
IN THE U.S.A.

**\$1,199**  
for the Washer

Price does  
not include  
pedestals



## MAYTAG®

### MAYTAG® 3.6 CU FT CAPACITY TOP LOAD WASHER

- 800 RPM Spin Speed
- IntelliClean™ Impeller
- IntelliFill™ Automatic  
Water Level Sensor  
MVWC400XW

### MAYTAG® 7.0 CU FT CAPACITY ELECTRIC DRYER

- Smooth Balance™ Suspension System
- GentleBreeze™ Dryer Drum
- IntelliDry™ Sensor  
MEDC300XW

**\$599**

**\$549**



**\$699**

EACH

## MAYTAG®

### MAYTAG® BRAVOS X™ HIGH EFFICIENCY TOP LOAD WASHER

- IntelliFill™ Automatic Water Level Sensor
- Variable temperature settings
- Advanced Vibration Control  
MVWX500XW

### MAYTAG® BRAVOS X™ HIGH EFFICIENCY ELECTRIC DRYER

- Smooth Balance™ Suspension System
- Premium Dryer Drum Rollers
- DuraCushion™ Dryer Drum Finish  
MEDX500XW



**\$799**

EACH

## Whirlpool® HOME APPLIANCES

### WHIRLPOOL® 3.6 CU FT CAPACITY TOP LOAD WASHER

- Stainless Steel Wash Basket
- H2Low™ Wash System  
with Auto Load Sensing
- See-through Tempered Glass Lid  
WTW5700XW

### WHIRLPOOL® 7.4 CU FT CAPACITY ELECTRIC DRYER

- AccelerCare® Drying System
- 5 Temperature Settings
- Wrinkle Shield™ Plus Option  
WED5700XW



**\$999**

EACH

## Whirlpool® HOME APPLIANCES

### WHIRLPOOL® 3.9 CU FT CAPACITY FRONT LOAD WASHER

- 1,400 RPM Maximum Spin Speed
- FanFresh™ Option for up to 10 Hours
- 14 Automatic Cycles  
WFW9750WW

### WHIRLPOOL® 7.5 CU FT CAPACITY ELECTRIC DRYER

- AccelerCare® Drying System
- Enhanced Touch-Up Steam Cycle
- Wrinkle Shield™ Plus Option  
WED9750WW

Price does not include pedestals

# SPECIAL FINANCING AVAILABLE

on Whirlpool® and Maytag® appliances \$499 and up.

On Approval of credit. See store for details.



## FOUR PIECE WHIRLPOOL® SUITE PACKAGE only \$2,456

### WHIRLPOOL® SIDE-BY-SIDE REFRIGERATOR

- Maximum Possible Space for Frozen Food
- PuR® Water Filtration System
- Clear Crisper

ED5FVGXVS

### WHIRLPOOL® OVER-THE-RANGE MICROWAVE

- 1,000 Watts Cooking Power
- Convertible Ventilation
- 2-Speed Fan/220 CFM

WMH1163XVS

### WHIRLPOOL® ELECTRIC RANGE

- 2 Adjustable Oven Racks
- Lower Storage Drawer
- Custom Broil

WFE301LVS

### WHIRLPOOL® TALL TUB DISHWASHER

- Quiet Partner™ II Sound Package
- In-Rack Silverware Basket
- 4 Automatic Cycles

DU850SWPS

## MAYTAG®

### MAYTAG® TALL TUB DISHWASHER

- Twice the Life Motor
- Light Wash Cycle
- JetClean® Plus Wash System

MDB4630AWW

**\$379**

### MAYTAG® ELECTRIC RANGE WITH EVENAIR™ CONVECTION

- SteamClean Option
- Self-Cleaning Oven with Adjustable Levels
- Keep Warm™ Setting

MER7775WB

**\$799**



### WHIRLPOOL® ELECTRIC RANGE

- Upswept Porcelain SpillGuard™ Cooktop
- EasyView™ Extra-Large Oven Window
- Custom Broil

WFE301LVB

**\$549**

### WHIRLPOOL® ELECTRIC RANGE

- Hidden Bake Element
- AccuBake® Temperature Management System
- SteamClean Option

WFE381LVS

**\$949**

## MAYTAG®

### MAYTAG® ELECTRIC RANGE

- Precision Cooking™ System with PreciseBake
- EvenAir™ Convection System
- SteamClean Option

MER7775WW

**\$799**

### MAYTAG® DOUBLE OVEN RANGE WITH SPEED HEAT™ ELEMENT

- Power Preheat in Both Ovens
- Dual-Choice™ Element
- DuraClean™ Smooth-Gloss Backguard

MET8665XS

**\$1,349**

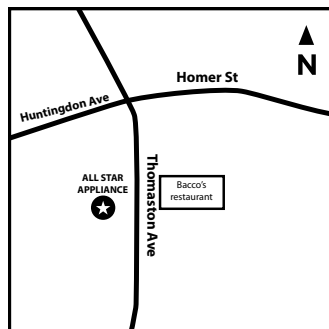


**Amana MAYTAG®**

**MAYTAG**  
HOME APPLIANCE CENTER



MHAC\_AB\_Jan



## ALLSTAR HOME APPLIANCE CENTER

1215 Thomaston Ave  
WATERBURY, CT 06704

P: 203-597-0363

F: 203-597-0113

**STORE HOURS**  
M, Tu, W, F 9-6, THU 9-7 SAT 10-4  
**CLOSED SUNDAYS**

### Visit Our New Location:

Rt 8N, Exit 36; Go Right, and take the first right.

### Or:

Rt 8 S, Exit 36; Go left, take the first left and first right

Celebrating Our  
**28th Anniversary!**

[www.AllStarAppliances.net](http://www.AllStarAppliances.net)

**We've moved! Come visit our new convenient location with more parking!**

MT-131

*Happy New Year!*